



# User's manual DM221/DM221-2

## Digital Audio Monitor



### Congratulations

on purchasing your new VTech product. Before using this product, please read **Important safety instructions**.

For support, shopping, and everything new at VTech, visit our website at [www.vtechphones.com](http://www.vtechphones.com).

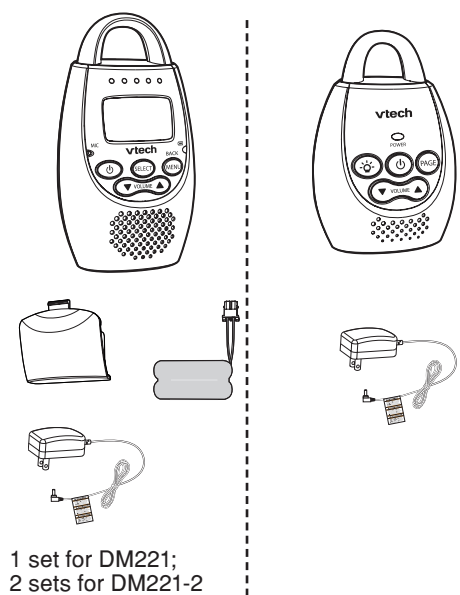
**Register online to get an additional 3-month warranty!**

Visit [www.vtechphones.com](http://www.vtechphones.com).

**Registration**  
Register your product online for enhanced warranty support.

**Product news**  
Learn about the latest VTech products.

### What's in the box



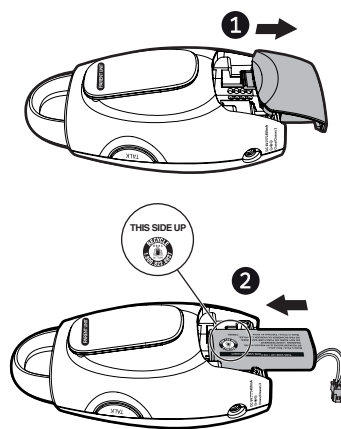
1 set for DM221;  
2 sets for DM221-2

### Install the battery

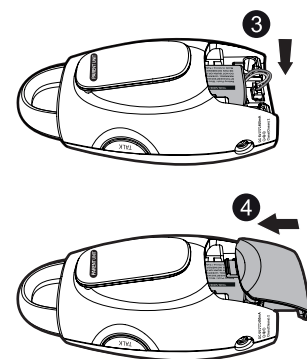
The parent unit runs on rechargeable battery or AC power. To continuously monitor your baby, make sure you use both battery and AC power at the same time. With the battery alone, the parent unit can cordlessly run for a short time only.

- Use only the battery supplied with this product.
- The operating time for using the rechargeable battery is short. If you want to monitor your baby for a long time, we recommend you connect the parent unit to AC power.
- If the parent unit will not be used for a long time, disconnect and remove the battery to prevent possible leakage.

Install the battery as shown below.



- NOTE: Make sure the **THIS SIDE UP** is facing up while inserting the battery.



### Replace the battery

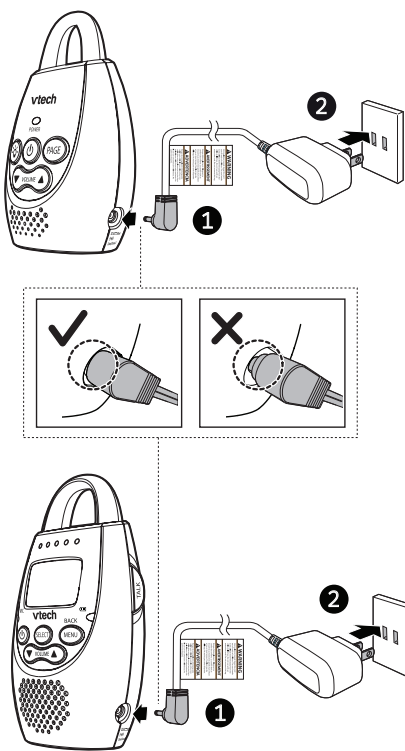
To replace the battery, unplug the battery connector from the socket, and then pull the battery out of the battery compartment. Follow the steps above to install the battery.

### Connect and charge the battery

#### NOTES

- Use only the power adapters supplied with this product.
- Make sure the electrical outlets are not controlled by wall switches.
- The power adapters are intended to be correctly oriented in a vertical or floor mount position. The prongs are not designed to hold the plug in place if it is plugged into a ceiling, under-the-table or cabinet outlet.
- Make sure the parent unit, the baby unit and the power adapter cords are out of reach of children.

### Connect the baby monitor



### Charge the parent unit battery

When you have connected the parent unit and installed its battery for the first time, it powers on automatically. The battery icon indicates the battery status (see the following table).

#### NOTES

- The parent unit battery is fully charged after 11 hours of continuous charging.
- It takes longer to charge the battery when the parent unit is turned on. To shorten the charging time, turn the parent unit off while charging.

Battery indicators	Battery status	Action
The battery icon is off.	No battery is installed but operates using AC power.	Install the parent unit battery. Charge without interruption (at least 30 minutes).
The screen displays <b>LOW BATTERY</b> and . The  flashes.	The battery has very little charge and may be used for only a short time.	Charge without interruption (about 30 minutes).
The battery icon becomes solid .	The battery is fully charged.	To keep the battery charged, connect it to AC power when not in use.

When it is fully charged, you can expect the following performance:

Operation	Operating time
While in standby* mode	Up to 5 days
While in monitoring** mode	Up to 4.5 hours

\* The parent unit is not charging nor in use.

\*\* Operating times vary depending on the sensitivity level you set, your actual use and the age of the battery.

### Before use

#### NOTE

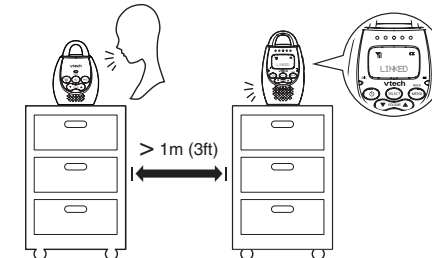
- This baby monitor is intended as an aid. It is not a substitute for proper adult supervision, and should not be used as such.

### Test your audio monitor

You may test the baby monitor before initial use, and at regular times thereafter.

#### CAUTION

- For hearing protection, make sure the parent unit is more than 1 meter (3 feet) away from the baby unit. If you hear any high-pitched noise, move the parent unit further until the noise stops. You can also press **VOLUME** on the parent unit to lower or mute the noise.



1. Make sure your baby unit and parent unit are on.
2. Speak towards the microphone of the baby unit. You will hear the sound at the parent unit, and see the visual sound indicators light up.

#### NOTE

- When the parent unit displays **NOT LINKED** and flashes, move the parent unit closer to the baby unit (observe the minimum distance of 1 meter/ 3 feet). You can also check if the baby monitor is connected to a live power socket and switched on.

#### TIP

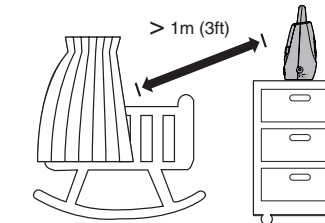
- Increase the speaker volume of the parent unit if you cannot hear the sounds transmitted from the baby unit.

### Positioning the baby monitor

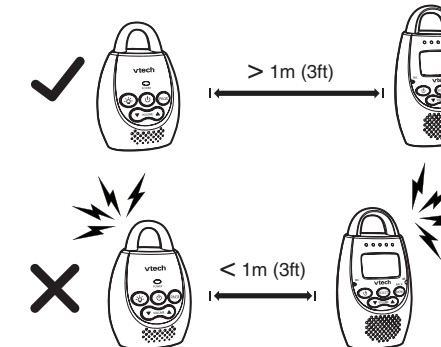
#### CAUTIONS

- Keep the baby unit out of the reach of the baby. Never place or mount the baby unit inside the baby's crib or playpen.
- Do not expose the baby unit to extreme heat or direct sunlight.

1. Place the baby unit more than 1 meter (3 feet) away from your baby.



2. Place the parent unit more than 1 meter (3 feet) away from the baby unit.



#### CAUTION

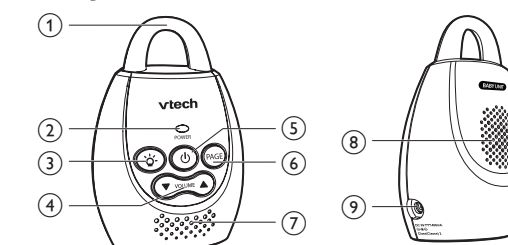
- The default volume of your parent unit is level 3. If you experience high-pitched screaming noise from your baby monitor while positioning:
  - Make sure your baby unit and parent unit are more than 1 meter (3 feet) apart, OR
  - Turn down the volume of your parent unit.

### Operating range

The operating range of the baby monitor is up to 300 meters (1,000 feet) outdoors or 50 meters (160 feet) indoors. The actual operating range may vary depending on the environmental conditions, and other interferences such as walls, doors, and other obstructions.

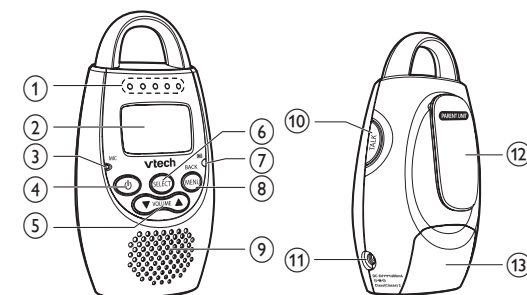
### Overview

#### Baby unit overview



1	<b>Night light</b> <ul style="list-style-type: none"> <li>• On when night light is turned on manually or triggered by sound.</li> <li>• Off when night light is turned off manually or after 15 minutes of silence.</li> </ul>
2	<b>POWER light</b> <ul style="list-style-type: none"> <li>• On when the baby unit is turned on.</li> </ul>
3	<ul style="list-style-type: none"> <li>• Press to turn the night light on or off.</li> </ul>
4	<b>VOLUME</b> <ul style="list-style-type: none"> <li>• Press to adjust the speaker volume.</li> </ul>
5	<b>(On/off)</b> <ul style="list-style-type: none"> <li>• Press and hold to power on or off.</li> </ul>
6	<b>PAGE</b> <ul style="list-style-type: none"> <li>• Press to start or stop paging parent unit.</li> </ul>
7	<b>Microphone</b>
8	<b>Speaker</b>
9	<b>Power jack</b>

### Parent unit overview



1	<b>Visual sound indicator</b> ○○○○○ The visual sound indicator has two functions. One is to show the sound level detected by the baby unit. The other one is to show the volume level during speaker volume setting. <b>Sound level detected by the baby unit</b> <ul style="list-style-type: none"> <li>• ○○○○○ One to three green lights indicate a moderate sound level detected by the baby unit.</li> <li>• ●○○○○ Additional red lights indicate a higher sound level detected by the baby unit (e.g. baby crying loudly).</li> </ul> <b>Speaker volume level</b> <ul style="list-style-type: none"> <li>• ○○○○○ One to three green lights indicate <b>Level 1 to Level 3</b> of the speaker volume setting.</li> <li>• ●○○○○ Additional red lights indicate <b>Level 4 to Level 5</b> of the speaker volume setting.</li> </ul>
2	<b>LCD panel</b>
3	<b>Microphone</b>
4	<b>(On/off)</b> <ul style="list-style-type: none"> <li>• Press and hold to power on or off.</li> <li>• While in a menu, press to return to idle screen.</li> </ul>
5	<b>VOLUME</b> <ul style="list-style-type: none"> <li>• Press to adjust the speaker volume.</li> <li>• While in a menu, press to scroll down or up.</li> </ul>

6	<b>SELECT</b> <ul style="list-style-type: none"> <li>• While in a menu, press to choose an item, or save a setting.</li> </ul>
7	<b>Battery level indicator</b> <ul style="list-style-type: none"> <li>• Light on when the battery is being charged.</li> <li>• Light flashes when the battery is low and needs charging.</li> <li>• Light off when no battery is installed.</li> </ul>
8	<b>MENU/BACK</b> <ul style="list-style-type: none"> <li>• Press to enter the menu.</li> <li>• While in a menu, press to return to the previous menu.</li> </ul>
9	<b>Speaker</b>
10	<b>TALK</b> <ul style="list-style-type: none"> <li>• Press and hold to talk to the baby unit.</li> </ul>
11	<b>Power jack</b>
12	<b>Belt clip</b>
13	<b>Battery compartment cover</b>

### Parent unit display icons

	<b>Connection status</b> <ul style="list-style-type: none"> <li>•  displays when strong signal strength is detected between the baby unit and the parent unit.</li> <li>•  displays when moderate signal strength is detected between the baby unit and the parent unit.</li> <li>•  displays when the weak signal strength is detected between the baby unit and the parent unit.</li> <li>•  flashes when the link between the baby unit and the parent unit is lost.</li> </ul>
	<b>Night light auto-on</b> <ul style="list-style-type: none"> <li>• On when the night light auto-on feature is turned on.</li> </ul>
	<b>Sound alert</b> <ul style="list-style-type: none"> <li>• Displays when the sound alert of the parent unit is turned on.</li> <li>• Flashes when there are loud sounds detected from the baby unit and the parent unit is in mute.</li> </ul>
	<b>Vibration alert</b> <ul style="list-style-type: none"> <li>• Displays when the vibration alert of the parent unit is turned on.</li> <li>• Flashes when there are loud sounds detected from the baby unit.</li> </ul>
	<b>Mute</b> <ul style="list-style-type: none"> <li>• Displays when the volume is turned off.</li> </ul>
	<b>Battery status</b> <ul style="list-style-type: none"> <li>•  animates when the battery is charging.</li> <li>•  displays solid when the battery is fully charged.</li> <li>•  flashes when the battery the charging fails.</li> <li>•  flashes when the battery is in low level and needs charging.</li> <li>• No battery icon displays when there is no battery installed.</li> </ul>

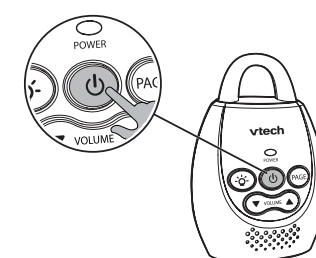
### Parent unit display screen messages

CHECK BATT	The battery charging performance is abnormal, the  light is off and the  icon flashes on the screen.
LINKED	The link between the parent unit and the baby unit is established.
LOW BATTERY	The parent unit uses only the rechargeable battery pack and it needs to be recharged.
NOT LINKED	The link between the parent unit and the baby unit is lost continuously for over 10 seconds.
PAGING	All idle parent units are being paged by the baby unit.
SAVED	Your selection has been saved.
SEARCHING	The parent unit is out of range of the baby unit, or the baby unit is out of power.
TALK	The parent unit is talking to the baby unit.
TALKBACK	The other parent unit is talking to the baby unit.

### Using the baby monitor

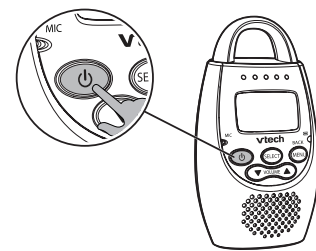
#### Power on or off the baby unit

- Press and hold to power on the baby unit. The power light turns on.
- Press and hold again to power off the baby unit. The power light turns off.



#### Power on or off the parent unit

- Press and hold to power on the parent unit. The screen turns on.
- Press and hold again to power off the parent unit. The screen turns off.



#### NOTE

- The parent unit powers on automatically once it is connected to AC power or battery installed. The baby unit also powers on automatically once connected to AC power.

#### Adjust the speaker volume for baby unit

- Press **VOLUME** or **VOLUME** on the baby unit at any time.

#### Adjust the speaker volume for parent unit

- You can adjust the speaker volume from **VOLUME 1 to VOLUME 5**, or turn it off. The speaker volume is preset to **VOLUME 3**.
- Press **VOLUME** or **VOLUME** when the parent unit is not in use.

When the speaker volume is set to off, the screen displays .

### Adjust the sound sensitivity of the baby unit

You can choose to hear sounds from the baby unit all the time, or to hear sounds that exceed a certain level. You can use the parent unit to adjust the microphone sensitivity of your baby unit. The higher the sensitivity level, the more sensitive the baby unit is in detecting sounds for transmitting to the parent unit. The sound sensitivity is preset to **LEVEL 5**.

#### Sound sensitivity table for reference

Display	Sensitivity	Description
LEVEL 5	High sensitivity	<b>High sensitivity level</b> The parent unit speaker is constantly on, and you will hear all sounds (including background noises) from your baby's room.
LEVEL 4	Medium high sensitivity level	The parent unit speaker turns on for soft babbling and louder sounds from your baby. It remains quiet when your baby sleeps soundly.
LEVEL 3		The parent unit speaker turns on for loud babbling and louder sounds from your baby. It remains quiet when your baby makes soft sounds.
LEVEL 2	Medium low sensitivity level	The parent unit speaker turns on for crying and louder sounds from your baby. It remains quiet when your baby makes soft sounds.
LEVEL 1	Low sensitivity	The parent unit speaker turns on for loud crying or screaming sounds from your baby. It remains quiet when your baby makes soft sounds.

1. Press **MENU** when the parent unit is not in use.
2. Press **SELECT**.
3. Press or to choose the sensitivity level.
4. Press **SELECT** to confirm your selection. The screen displays **SAVED** and you hear a confirmation tone.

#### NOTE

- To enter the sensitivity menu of the parent unit, the baby unit must be turned on.

#### Sound alert

Sound alert feature works only when the parent unit is in mute.

If you turn on the sound alert, the parent unit beeps when the baby unit detects sounds which light up four sound level indicators on the parent unit.

When the sound alert of the parent unit is turned on, displays. The sound alert is preset to **OFF**.

1. Press **MENU** when the parent unit is not in use.
2. Press or to choose **SOUND ALERT**, then press **SELECT**.
3. Press or to choose **ON** or **OFF**.
4. Press **SELECT** to confirm your selection. The screen displays **SAVED** and you hear a confirmation tone.

#### NOTE

- The sound alert setting on each parent unit is independent.

#### Vibration alert

You can turn on the vibration alert so that the parent unit vibrates when the baby unit detects sounds which light up four sound level indicators on the parent unit.

When the vibration alert of the parent unit is turned on, displays. The vibration alert is preset to **OFF**.

1. Press **MENU** when the parent unit is not in use.
2. Press or to choose **VIBE ALERT**, then press **SELECT**.
3. Press or to choose **ON** or **OFF**.
4. Press **SELECT** to confirm your selection. The screen displays **SAVED** and you hear a confirmation tone.

#### NOTE

- Each time you set the vibration alert to **ON**, the parent unit vibrates briefly after you press **SELECT**.
- The vibration alert setting on each parent unit is independent.

#### Night light auto-on

You can turn on or off the night light by pressing manually on the baby unit. You can also use the parent unit to set the night light on the baby unit to automatically turn on when the baby unit detects a sound.

When the night light auto-on setting is set to **YES**, displays. The default setting is preset to **NO**.

1. Press **MENU** when the parent unit is not in use.
2. Press or to choose **NIGHTLIGHT**, then press **SELECT**.
3. Press **SELECT** to choose **AUTO ON**.
4. Press or to choose **YES** or **NO**.
5. Press **SELECT** to confirm your selection. The screen displays **SAVED** and you hear a confirmation tone.

#### NOTES

- To enter the night light menu of the parent unit, the baby unit must be turned on.
- When the night light is on, if you set its auto-on to **NO**, the night light will turn off.
- If night light auto-on is set to **YES**, and you turn off the night light manually, the night light will not be triggered by sound within 5 minutes.
- Night light will automatically turn off after 15 minutes of silence.

#### Language

You can select a language (English, French or Spanish) to be used in all screen displays. The language is preset to **English**.

1. Press **MENU** when the parent unit is not in use.
2. Press or to choose **LANGUAGE**, then press **SELECT**.
3. Press or to choose **ENGLISH**, **Francais** or **ESpanol**.
4. Press **SELECT** to confirm your selection. The screen displays **SAVED** and you hear a confirmation tone.

#### NOTE

- The language setting on each parent unit is independent.



### Set default

Use this feature to restore to the default settings. Restoring the default settings on one parent unit will also reset the shared settings for sensitivity and night light auto-on feature of the other parent unit.

- Press **MENU** when the parent unit is not in use.
- Press **▲** or **▼** to choose **SET DEFAULT**, then press **SELECT**.
- Press **▲** or **▼** to choose **YES** or **NO**.
- When you choose **YES**, press **SELECT** to confirm your selection. The screen displays **SAVED** and you hear a confirmation tone.

**-OR-**

When you choose **NO**, press **SELECT** to confirm your selection. The screen displays the previous menu.

#### Talk to the baby unit

You can broadcast messages from a parent unit to the baby unit and the other parent unit. If you have two parent units, you can use both of them at the same time to talk to the baby unit.

- Press and hold **TALK** on the side of the parent unit. The screen displays **TALK** when the voice connection to the baby unit is made. Speak towards the **MIC** on the parent unit. Your voice is broadcast to the baby unit and the other parent unit.

#### NOTES

- If the speaker volume of the parent unit is set to **VOLUME OFF**, it will be reset to the default volume when you **press and hold TALK**.
- When a parent unit is talking to the baby unit, it is also broadcast to the other parent unit. However, sounds from the baby unit cannot be transmitted to the parent units at the moment.

#### Find/page the parent unit

Use this feature to find misplaced parent units.

- Press **PAGE** on the baby unit. All idle parent units ring and display **PAGING**.
- To end paging, press any key on the parent unit, or press **PAGE** on the baby unit.

#### NOTES

- Paging rings all parent units even if the speaker volume of parent unit is set to **VOLUME OFF**.
- The baby unit cannot page any parent unit that is turned off, out of range or talking to the baby unit.

## General product care

To keep this product working well and looking good, follow these guidelines:

- Avoid putting it near heating appliances and devices that generate electrical noise (for example, motors or fluorescent lamps).
- DO NOT expose it to direct sunlight or moisture.
- Avoid dropping the product or treating it roughly.
- Clean with a soft cloth.
- DO NOT immerse the parent unit and the baby unit in water and do not clean them under the tap.
- DO NOT use cleaning spray or liquid cleaners.
- Make sure the baby unit and parent unit are dry before you connect them to the mains again.

## Storage

When you are not going to use the baby monitor for some time, remove the rechargeable battery from the parent unit. Store the parent unit, the baby unit and the adapters in a cool and dry place.

## Frequently asked questions

Below are the questions most frequently asked about the baby monitor. If you cannot find the answer to your question, visit our website at **www.vtechphones.com** or call 1 (800) 595-9511 for customer service.

<b>Why does the baby monitor not respond normally?</b>	Try the following (in the order listed) for common cure: <ol style="list-style-type: none"><li>Disconnect the power to the baby unit and the parent units.</li> <li>Remove the batteries in the parent units. Then, install the batteries again.</li> <li>Wait a few minutes before connecting power back to the baby units and the parent unit.</li> <li>Turn on the baby unit and the parent units.</li> <li>Wait for the parent units to synchronize with the baby unit. Allow up to one minute for this to take place.</li></ol>
<b>Why doesn't the screen of the parent unit go on when I switch on the unit?</b>	Perhaps the rechargeable battery of the parent unit is empty and the parent unit is not connected to the power. Insert the appliance plug into the parent unit and put the adapter in a wall socket.
<b>Why doesn't the POWER light of the baby unit go on when I switch on the unit?</b>	Perhaps the baby unit is not connected to the power. Connect the baby unit to the power.
<b>Why does the baby monitor produce a high-pitched noise?</b>	The units may be too close to each other. Make sure the parent unit and the baby unit are more than 1 meter (3 feet) away from each other.
<b>Why does the parent unit react too quickly to other sounds?</b>	The baby unit also detects other sounds than those of your baby. Adjust the sensitivity level to a lower level or adjust the speaker volume on the parent unit.

## Important safety instructions

When using your equipment, basic safety precautions should always be followed to reduce the risk of fire, electric shock and injury, including the following:

- Follow all warnings and instructions marked on the product.
- Adult setup is required.
- This product is intended as an aid. It is not a substitute for responsible and proper adult supervision and should not be used as such.
- This product is not intended for use as a medical monitor.
- Do not use this product near water. For example, do not use it next to a bath tub, wash bowl, kitchen sink, laundry tub or swimming pool, or in a wet basement or shower.
- CAUTION:** Use only the batteries indicated in this manual. There may be a risk of explosion

- If a wrong type of battery is used for the parent unit. Use only the supplied rechargeable battery or replacement battery pack (BT166342/ BT266342) for the parent unit. Do not dispose of batteries in a fire. They may explode. Dispose of used battery according to the information in **The RBRC® seal**.
- Use only the adapters included with this product. Incorrect adapter polarity or voltage can seriously damage the product. Baby unit power adapter: Output: 6V DC 400mA; Parent unit power adapter: Output: 6V DC 400mA.
- The power adapters are intended to be correctly oriented in a vertical or floor mount position. The prongs are not designed to hold the plug in place if it is plugged into a ceiling, under-the-table or cabinet outlet.
- For pluggable equipment, the socket-outlet shall be installed near the equipment and shall be easily accessible.
- Unplug this product from the wall outlet before cleaning. Do not use liquid or aerosol cleaners. Use a damp cloth for cleaning.
- Unplug the power cords before replacing batteries.
- Do not cut off the power adapters to replace them with other plugs, as this causes a hazardous situation.
- Do not allow anything to rest on the power cords. Do not install this product where the cords may be walked on or crimped.
- This product should be operated only from the type of power source indicated on the marking label. If you are not sure of the type of power supply in your home, consult your dealer or local power company.
- Do not overload wall outlets or use an extension cord.
- Do not place this product on an unstable table, shelf, stand or other unstable surfaces.
- This product should not be placed in any area where proper ventilation is not provided. Slots and openings in the back or bottom of this product are provided for ventilation. To protect them from overheating, these openings must not be blocked by placing the product on a soft surface such as a bed, sofa or rug. This product should never be placed near or over a radiator or heat register.
- Never push objects of any kind into this product through the slots because they may touch dangerous voltage points or create a short circuit. Never spill liquid of any kind on the product.

### SAVE THESE INSTRUCTIONS

#### Cautions

- Use and store the product at a temperature between 32°F and 104°F.
- Do not expose the product to extreme cold, heat or direct sunlight. Do not put the product close to a heating source.
- Batteries should not be exposed to excessive heat such as bright sunshine or fire.
- Make sure the baby unit(s) and the adapter cord(s) are always out of reach of the baby, at least 3 feet away from the baby or crib, to avoid a possible strangulation hazard.
- Never place the baby unit(s) inside the baby's crib or playpen. Never cover the baby unit(s) or parent unit with anything such as a towel or a blanket.
- Other electronic products may cause interference with your baby monitor. Try installing your baby monitor as far away from these electronic devices as possible: wireless routers, radios, cellular telephones, intercoms, room monitors, televisions, personal computers, kitchen appliances and cordless telephones.

## Limited warranty

#### What does this limited warranty cover?

The manufacturer of this VTech Product warrants to the holder of a valid proof of purchase ("Consumer" or "you") that the Product and all accessories provided in the sales package ("Product") are free from defects in material and workmanship, pursuant to the following terms and conditions, when installed and used normally and in accordance with the Product operating instructions. This limited warranty extends only to the Consumer for Products purchased and used in the United States of America and Canada.

#### What will VTech do if the Product is not free from defects in materials and workmanship during the limited warranty period ("Materially Defective Product")?

During the limited warranty period, VTech's authorized service representative will repair or replace at VTech's option, without charge, a Materially Defective Product. If we repair the Product, we may use new or refurbished replacement parts. If we choose to replace the Product, we may replace it with a new or refurbished Product of the same or similar design. We will retain defective parts, modules, or equipment. Repair or replacement of the Product, at VTech's option, is your exclusive remedy. VTech will return the repaired or replacement Products to you in working condition. You should expect the repair or replacement to take approximately 30 days.

#### How long is the limited warranty period?

The limited warranty period for the Product extends for ONE (1) YEAR from the date of purchase. If VTech repairs or replaces a Materially Defective Product under the terms of this limited warranty, this limited warranty also applies to the repaired or replacement Product for a period of either (a) 90 days from the date the repaired or replacement Product is shipped to you or (b) the time remaining on the original one-year warranty; whichever is longer.

#### What is not covered by this limited warranty?

This limited warranty does not cover:

- Product that has been subjected to misuse, accident, shipping or other physical damage, improper installation, abnormal operation or handling, neglect, inundation, fire, water or other liquid intrusion; or
- Product that has been damaged due to repair, alteration or modification by anyone other than an authorized service representative of VTech; or
- Product to the extent that the problem experienced is caused by signal conditions, network reliability, or cable or antenna systems; or
- Product to the extent that the problem is caused by use with non-VTech accessories; or
- Product whose warranty/quality stickers, product

#### Precautions for users of implanted cardiac pacemakers

Cardiac pacemakers (applies only to digital cordless devices):

Wireless Technology Research, LLC (WTR), an independent research entity, led a multidisciplinary evaluation of the interference between portable wireless devices and implanted cardiac pacemakers. Supported by the U.S. Food and Drug Administration, WTR recommends to physicians that:

#### Pacemaker patients

- Should keep wireless devices at least six inches from the pacemaker.
- Should NOT place wireless devices directly over the pacemaker, such as in a breast pocket, when it is turned ON.

WTR's evaluation did not identify any risk to bystanders with pacemakers from other persons using wireless devices.

#### Electromagnetic fields (EMF)

This VTech product complies with all standards regarding electromagnetic fields (EMF). If handled properly and according to the instructions in this user's manual, the product is safe to be used based on scientific evidence available today.

## The RBRC® seal

The RBRC® seal on the nickel-metal battery indicates that VTech Communications, Inc. is voluntarily participating in an industry program to collect and recycle these batteries at the end of their useful lives, when taken out of service within the United States and Canada.

The RBRC® program provides a convenient alternative to placing used nickel-metal batteries into the trash or municipal waste, which may be illegal in your area.

VTech's participation in RBRC® makes it easy for you to drop off the spent battery at local retailers participating in the RBRC® program or at authorized VTech product service centers. Please call **1 (800) 8 BATTERY®** for information on Ni-MH battery recycling and disposal bans/restrictions in your area. VTech's involvement in this program is part of its commitment to protecting our environment and conserving natural resources.

**RBRC® and 1 (800) 8 BATTERY® are registered trademarks of Rechargeable Battery Recycling Corporation.**

RBRC logo

The RBRC logo is a circular logo with the words "RECYCLE" and "RBRC" around the top and "1 (800) 8 BATTERY" around the bottom.

Some states/provinces do not allow limitations on how long an implied warranty lasts, so the above limitation may not apply to you. In no event shall VTech be liable for any indirect, special, incidental, consequential, or similar damages (including, but not limited to lost profits or revenue, inability to use the Product or other associated equipment, the cost of substitute equipment, and claims by third parties) resulting from the use of this Product. Some states/ provinces do not allow the exclusion or limitation of incidental or consequential damages, so the above limitation or exclusion may not apply to you.

should not rely on any such modification.

State/Provincial Law Rights: This warranty gives you specific legal rights, and you may also have other rights, which vary from state to state or province to province.

Limitations: Implied warranties, including those of fitness for a particular purpose and merchantability (an unwritten warranty that the Product is fit for ordinary use) are limited to one year from the date of purchase. Some states/provinces do not allow limitations on how long an implied warranty lasts, so the above limitation may not apply to you. In no event shall VTech be liable for any indirect, special, incidental, consequential, or similar damages (including, but not limited to lost profits or revenue, inability to use the Product or other associated equipment, the cost of substitute equipment, and claims by third parties) resulting from the use of this Product. Some states/ provinces do not allow the exclusion or limitation of incidental or consequential damages, so the above limitation or exclusion may not apply to you.

**Please retain your original sales receipt as proof of purchase.**

## FCC and IC regulations

#### FCC Part 15

This equipment has been tested and found to comply with the requirements for a Class B digital device under Part 15 of the Federal Communications Commission (FCC) rules. These requirements are intended to provide reasonable protection against harmful interference in a residential installation. This equipment generates, uses and can radiate radio frequency energy and, if not installed and used in accordance with the instructions, may cause harmful interference to radio communications. However, there is no guarantee that interference will not occur in a particular installation. If this equipment does cause harmful interference to radio or television reception, which can be determined by turning the equipment off and on, the user is encouraged to try to correct the interference by one or more of the following measures:

- Reorient or relocate the receiving antenna.
- Increase the separation between the equipment and receiver.
- Connect the equipment into an outlet on a circuit different from that to which the receiver is connected.
- Consult the dealer or an experienced radio/TV technician for help.

Changes or modifications to this equipment not expressly approved by the party responsible for compliance could void the user's authority to operate the equipment.

This device complies with Part 15 of the FCC rules. Operation is subject to the following two conditions: (1) this device may not cause harmful interference, and (2) this device must accept any interference received, including interference that may cause undesired operation.

To ensure safety of users, the FCC has established criteria for the amount of radio frequency energy that can be safely absorbed by a user or bystander according to the intended usage of the product. This product has been tested and found to comply with the FCC criteria. The baby unit shall be installed and used such that parts of all persons' body are maintained at a distance of approximately 8 in (20 cm) or more. The transmitter and antenna of the parent unit shall be held at least 1 in (2.5 cm) from your face.

This Class B digital apparatus complies with Canadian requirement: CAN ICES-3 (B)/NMB-3(B)

#### Industry Canada

This device complies with Industry Canada licence-exempt RSS standard(s).

Operation is subject to the following two conditions: (1) this device may not cause harmful interference, and (2) this device must accept any interference, including interference that may cause undesired operation.

The term "IC:" before the certification/registration

## Technical specifications

Frequency control	Crystal controlled PLL synthesizer
Transmit frequency	Baby unit: 1921.536-1928.448 MHz <p>Parent unit: 1921.536-1928.448 MHz</p>
Channels	5
LCD	35 (x) x 21.2 (y) mm B&W LCD
Nominal effective range	Maximum power allowed by FCC and IC. Actual operating range may vary according to environmental conditions at the time of use.
Power requirement	Parent unit: 2.4 V Ni-MH battery <p>Baby unit power adapter: Output: 6V DC 400mA</p> <p>Parent unit power adapter: Output: 6V DC 400mA</p>

number only signifies that the Industry Canada technical specifications were met.

This product meets the applicable Industry Canada technical specifications.

#### RF radiation exposure statement

The baby unit complies with FCC RF radiation exposure limits set forth for an uncontrolled environment. The baby unit should be installed and operated with a minimum distance of 8 in (20 cm) between the baby unit and all persons' body. Use of other accessories may not ensure compliance with FCC RF exposure guidelines. This transmitter must not be co-located or operating in conjunction with any other antenna or transmitter. This equipment complies also with Industry Canada RSS-102 with respect to Canada's Health Code 6 for Exposure of Humans to RF Fields.

## California Energy Commission battery charging testing mode

This baby monitor meets the California Energy Commission (CEC) regulations for energy consumption. Your baby monitor is set up to comply with the energy-conserving standards right out of the box.

Follow the instructions to install and charge the battery. The CEC battery charging testing mode is activated while charging.

Even if the parent unit is paired to baby units, the CEC battery charging testing mode is activated while it is powered off and charging.

## For cETL compliance only

#### Mesures de sécurité importantes

Lorsque vous utilisez votre appareil, vous devriez toujours suivre certaines mesures de précaution de base afin de réduire les risques d'incendie, d'électrocution et de blessures corporelles, dont ceux qui suivent:

- Observez toutes les instructions et mises en garde inscrites sur l'appareil.
- L'installation par un adulte est requise.
- Ce produit a été conçu pour être un dispositif d'appoint seulement. Il n'est pas le remplacement d'une supervision responsable et adéquate par un adulte et ne devrait pas être utilisé comme telle.
- Ce produit n'est pas conçu pour être utilisé en tant que moniteur médical.
- N'utilisez pas cet appareil près de l'eau ni de toute autre source d'humidité, par exemple, près d'une baignoire, cuve à lessive, évier de cuisine, dans un sous-sol humide ni près d'une piscine, dans un soussol humide ou une douche.

en le plaçant sur un lit, divan, tapis ou toute autre surface similaire. De même, ne le positionnez pas à proximité ni au-dessus d'une source de chaleur ou d'un calorifère. De plus, ne placez pas l'appareil dans un endroit avant de vous assurer qu'il y ait une bonne circulation d'air.

18.N'encefez jamais d'objets à travers les ouvertures de cet appareil, car ils pourraient entrer en contact avec des points de tension dangereux ou causer des courts-circuits qui peuvent dégénérer en incendies ou en risques d'électrocution. Ne renversez jamais de liquide dans ce produit.

19.Afin de réduire les risques d'électrocution, ne démontez pas cet appareil, mais apportez-le dans un centre de service autorisé. L'ouverture du boîtier ou le retrait de toutes pièces que contient cet appareil, à l'exception de l'accès autorisé à certaines portes ou ouvertures, risque de vous exposer à des points de tension dangereux ou d'autres dangers. Un remontage incorrect peut par la suite présenter des risques d'électrocution.

20.Vous devriez tester la réception chaque fois que vous mettez l'appareil en fonction.

21.Examinez Les composantes afin de vérifier si celles-ci ne sont pas endommagées.

22.Soyez avisé de la perte de la confidentialité lorsque vous utilisez les ondes publiques. Les conversations peuvent être entendues par d'autres moniteurs de bébé, des téléphones sans fil, des scanners, etc.

23.Les enfants devraient être supervisés afin de vous assurer qu'ils ne jouent pas avec l'appareil.

24.Le produit n'est pas conçu pour être utilisé par des personnes (incluant des enfants) aux capacités physiques, sensorielles ou mentales réduites ou qui manquent d'expérience et de connaissances, à moins qu'on leur ait donné suffisamment de supervision ou d'instructions relativement à l'utilisation de l'appareil par une personne responsable de leur sécurité.

### CONSERVEZ CES INSTRUCTIONS

#### Mises en garde

- Utilisez et entreposez le produit à une température entre 0° C (32°F) et 40° C (104° F).
- N'exposez pas cet appareil à des froids ou des chaleurs extrêmes, ainsi qu'à la lumière directe du soleil. Ne l'installez pas près d'une source de chauffage.
- Le bloc-piles ne doit pas être exposé à la chaleur excessive telle que la lumière du soleil ou au feu.



Specifications are subject to change without notice. © 2016 VTech Communications, Inc. All rights reserved. 10/16. DM221\_CIB\_V6.0 Document order number: 91-007075-040-100

